



Page 1 of 1

Paper: (none)

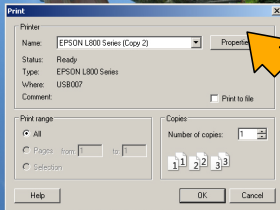
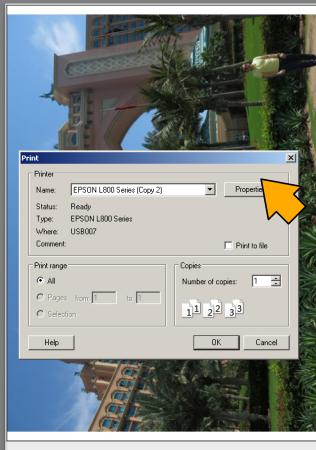
Printer: EPSON Stylus Pro 7900

Template Browser +

- ▶ Lightroom Templates
- ▶ User Templates

Collections +

- ▶ Smart Collections



Single Image / Contact Sheet

- Picture Package
- Custom Package

Image Settings ▾

- Zoom to Fill
- Rotate to Fit
- Repeat One Photo per Page

- Stroke Border
- Width: 1.0 pt

Layout ▾

Ruler Units: Inches

Margins

- Left: 0,11 in
- Right: 0,12 in
- Top: 0,11 in
- Bottom: 0,56 in

Page Grid

- Rows: 1
- Columns: 1

Cell Spacing

- Vertical: 0,00 in
- Horizontal: 0,00 in

Cell Size

- Height: 22,72 in
- Width: 16,31 in
- Keep Square

Guides ▾

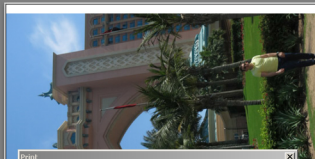
- Show Guides
- Rulers
- Page Bleed
- Margins and Gutters
- Image Cells
- Dimensions



Page 1 of 1

Paper: (none)

Printer: EPSON Stylus Pro 7900

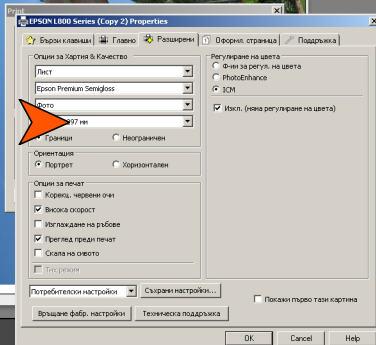


Template Browser +

- ▶ Lightroom Templates
- ▶ User Templates

Collections +

- ▶ Smart Collections



Single Image / Contact Sheet

- Picture Package
- Custom Package

Image Settings ▾

- Zoom to Fill
- Rotate to Fit
- Repeat One Photo per Page

Stroke Border

Width: 1.0 pt

Layout ▾

Ruler Units: Inches

Margins

Left: 0,11 in

Right: 0,12 in

Top: 0,11 in

Bottom: 0,56 in

Page Grid

Rows: 1

Columns: 1

Cell Spacing

Vertical: 0,00 in

Horizontal: 0,00 in

Cell Size

Height: 22,72 in

Width: 16,31 in

Keep Square

Guides ▾

 Show Guides

- Rulers
- Page Bleed
- Margins and Gutters
- Image Cells
- Dimensions



Page 1 of 1

Paper: (none)

Printer: EPSON L800 Series (C...



Template Browser +

- ▶ Lightroom Templates
- ▶ User Templates

Collections +

- ▶ Smart Collections

Single Image / Contact Sheet

- Picture Package
- Custom Package

Image Settings ▾

- Zoom to Fill
- Rotate to Fit
- Repeat One Photo per Page

- Stroke Border
- Width: 1.0 pt

Layout ◀

Guides ◀

Page ◀

Print Job ▾

Print to: Printer ▾

- Draft Mode Printing

 Print Resolution: 240 ppi Print Sharpening: Low ▾

Media Type: Glossy ▾

Color Management ▾

Profile: Managed by Printer ▾

 Managed by Printer Other... Print Adjustment

Brightness: 0

Contrast: 0

ⓘ When selecting "Managed by Printer", remember to enable color management in the printer driver dialog box.

Choose profiles to appear in the popup:

- | | |
|--|--|
| <input type="checkbox"/> HFA_Eps9900_MK_PRsatin | C:\windows\system32\spool\drivers\color\HFA_Eps9900_ |
| <input type="checkbox"/> HFA_Eps9900_MK_FRUltraSmooth | C:\windows\system32\spool\drivers\color\HFA_Eps9900_ |
| <input type="checkbox"/> HFA_Eps9900_PK_BarytaFB | C:\windows\system32\spool\drivers\color\HFA_Eps9900_ |
| <input type="checkbox"/> HFA_Eps9900_PK_FABaryta | C:\windows\system32\spool\drivers\color\HFA_Eps9900_ |
| <input type="checkbox"/> HFA_Eps9900_PK_FAPearl | C:\windows\system32\spool\drivers\color\HFA_Eps9900_ |
| <input type="checkbox"/> HFA_Eps9900_PK_PRBaryta | C:\windows\system32\spool\drivers\color\HFA_Eps9900_ |
| <input type="checkbox"/> HFA_Eps9900_PK_PRPearl | C:\windows\system32\spool\drivers\color\HFA_Eps9900_ |
| <input type="checkbox"/> L800 Epson Glossy | C:\windows\system32\spool\drivers\color\L800 Epson Glc |
| <input type="checkbox"/> L800 Epson Matte Paper-H/W | C:\windows\system32\spool\drivers\color\L800 Epson Ma |
| <input type="checkbox"/> L800 Epson Photo | C:\windows\system32\spool\drivers\color\L800 Epson Ph |
| <input type="checkbox"/> L800 Epson Photo Q/ty I3P | C:\windows\system32\spool\drivers\color\L800 Epson Ph |
| <input type="checkbox"/> L800 Epson Premium Glossy | C:\windows\system32\spool\drivers\color\L800 Epson Pre |
| <input checked="" type="checkbox"/> L800 Epson Premium Semigloss | C:\windows\system32\spool\drivers\color\L800 Epson Pr |
| <input type="checkbox"/> L800 Epson Ultra Glossy | C:\windows\system32\spool\drivers\color\L800 Epson Lit |
| <input type="checkbox"/> L800 Standard | C:\windows\system32\spool\drivers\color\L800 Standard |
| <input type="checkbox"/> PP-100N | C:\windows\system32\spool\drivers\color\E_PICMAFW_IC |
| <input type="checkbox"/> Pro 11880 ARMP_MK | C:\windows\system32\spool\drivers\color\Pro 11880 ARM |
| <input type="checkbox"/> Pro 11880 ARMP_PK | C:\windows\system32\spool\drivers\color\Pro 11880 ARM |

Include Display Profiles

OK

Cancel



Create Saved Print

Layout Style ▾

Single Image / Contact Sheet

Picture Package

Custom Package

Image Settings ▾

Zoom to Fill

Rotate to Fit

Repeat One Photo per Page

Stroke Border

Width: 1.0 pt

Layout ◀

Guides ◀

Page ◀

Print Job ▾

Print to: Printer ▾

Draft Mode Printing

Print Resolution: 240 ppi

Print Sharpening: Low ▾

Media Type: Glossy ▾

Color Management ▾


Profile: Other... ▾

Intent: Perceptual | Relative

Print Adjustment ▾

Brightness: 0

Contrast: 0

 When selecting "Managed by Printer", remember to enable color management in the printer driver dialog box.

Page Setup...

Use: Selected Photos ▾

Page 1 of 1

Print

Printer...



Page 1 of 1

Paper: (none)

Printer: EPSON L800 Series (C...



Template Browser +

- ▶ Lightroom Templates
- ▶ User Templates

Collections +

- ▶ Smart Collections

Single Image / Contact Sheet

- Picture Package
- Custom Package

Image Settings ▾

- Zoom to Fill
- Rotate to Fit
- Repeat One Photo per Page

- Stroke Border
- Width: 1.0 pt

Layout ◀

Guides ◀

Page ◀

Print Job ▾

Print to: Printer ▾

- Draft Mode Printing

 Print Resolution: 240 ppi Print Sharpening: Low ▾

Media Type: Glossy ▾

Color Management ▾

Profile: L800 Epson Premium Su... ▾

Perceptual | Relative

Preserve detail, but may change in-gamut colors. This color profile will use their own intent.

Contrast: 0

When selecting a custom profile, remember to turn off color management in the printer driver dialog box. Black Point Compensation will be used for this print.